



MALAYSIAN NOTICES TO MARINERS

Monthly Edition 06 of 2017
30th JUNE 2017

CONTENTS

- I - Explanatory Notes / Index of Charts Affected.
- II - Corrections to Charts.
- III - Navigational Warnings.
- IV - Corrigendum on Information of Malaysian Charts and Publication to be Published.
- V - Cumulative List of Malaysian Notices to Mariners.

Mariners are requested to inform The Hydrographer, National Hydrographic Centre, Bandar Armada Putra, Pulau Indah, 42009 PORT KLANG, Selangor Darul Ehsan, Malaysia. (Tel: +603 3169 4400), (Fax: +603 3101 3111), E-mail: nhc@hydro.gov.my immediately upon the discovery of new dangers, changes or defects in aids to navigation and shortcoming in Malaysian charts or publications.

DATO' FADZILAH BIN MOHD SALLEH
Rear Admiral
The Hydrographer

SECTION I
EXPLANATORY NOTES

Charts

The notices in Section II give instructions for the correction of Malaysian Chart (MAL) while notices in Section III give information on navigational warnings. Section IV gives information on Malaysian Charts and publication to be published. Section V gives information on Cumulative List of Malaysian Notices to Mariners. Geographical positions refer to the largest scale chart unless otherwise stated. Bearing are true reckoned clockwise from 000° to 359°, those relating to lights are from seaward.

Notices to Mariners correcting MAL charts are issued by the National Hydrographic Centre of Malaysia and should be inserted on the charts affected in waterproof violet ink in case of permanent notices and in pencil in case of temporary and preliminary notices.

Temporary and Preliminary Notices

These are indicated by (T) or (P) after the notice number.

Original Information

An asterisk (*) adjacent to the number of a notice indicates that the notice is based on original information.

Malaysian Notice (MN)

Mariners are to take note the legend MN indicates Malaysian Notice.

INDEX OF CHARTS AFFECTED			
MAL 515	117(T)*/2017, 189(T)*/2017, 119(T)*/2017,	MAL 6359	120(P)*/2017
MAL 5230	109*/2017	MAL 68	122(T)/2017
MAL 5300	110*/2017	MAL 7215	114*/2017
MAL 54	111*/2017	MAL 723	115*/2017
MAL 540	111*/2017, 112*/2017	MAL 7257	114*/2017
MAL 553	111*/2017, 121(T)/2017	MAL 731	114*/2017
MAL 554	111*/2017, 121(T)/2017	MAL 740	114*/2017
MAL 565	121(T)/2017	MAL 741	113*/2017
MAL 58	121(T)/2017	MAL 751	113*/2017
MAL 6	113*/2017	MAL 8617	116*/2017
MAL 6124	118(T)*/2017, 119(T)*/2017		

SECTION II
CORRECTIONS TO CHARTS

109*/2017 MALAYSIA – Negeri Sembilan – Sg. Linggi – Beacon.

Source: Marine Department of Malaysia.

Chart MAL 5230 (Last Correction NC/2016) WGS 84 DATUM

Amend elevation of light to, 3 m 02° 23'.50N, 101° 58'.40E

110*/2017 MALAYSIA – Selangor – Pulau Pintu Gedong – Dredged Area.

Source: National Hydrographic Centre.

Chart MAL 5300 (Last Correction 227/2016) WGS 84 DATUM

Replace *Dredged to 17₃ m(2016) / Dikorek ke 17₃ m(2016), with
Maintained depth 18m / Dikekalkan 18m* 02° 53'.00N, 101° 15'.66E

111*/2017 MALAYSIA – Perak – Pulau Jarak – Block.

Source: National Hydrographic Centre.

Chart MAL 54 (Last Correction 215/2016) WGS 84 DATUM

Insert the accompanying block, centred on: 04° 00'.00N, 100° 05'.00E

Chart MAL 540 (Last Correction 68/2017) WGS 84 DATUM

Insert the accompanying block, centred on: 03° 58'.00N, 100° 05'.00E

Chart MAL 553 (Last Correction 35/2017) WGS 84 DATUM

Insert the accompanying block, centred on: 03° 58'.00N, 100° 05'.00E

Chart MAL 554 (Last Correction 78/2017) WGS 84 DATUM

Insert the accompanying block, centred on: 03° 58'.00N, 100° 05'.00E

112*/2017 MALAYSIA – Selangor – Sungai Sekinchan – Beacon.

Source: Marine Department of Malaysia No. 38/2017.

Chart MAL 540 (Last Correction 111/2017) WGS 84 DATUM

Insert  FI.R.4s13m5M 03° 29'.88N, 101° 05'.08E

113*/2017 MALAYSIA – Sarawak – Bintulu – Platform.

Source: Murphy Sarawak Oil Co.Ltd.


Chart MAL 6 (Last Correction 76/2017) WGS 84 DATUM

Insert  PR-PA 03° 53'.10N, 112° 27'.29E

Chart MAL 741 (Last Correction 64/2017) WGS 84 DATUM

Insert  PR-PA 03° 53'.10N, 112° 27'.29E

Chart MAL 751 (Last Correction 50/2017) WGS 84 DATUM

Insert  PR-PA 03° 53'.10N, 112° 27'.29E

114*/2017 MALAYSIA – Sarawak – Kuala Rajang – Buoy.

Source: Sarawak Marine Department No. 75/2017*.

Chart MAL 7215 (Last Correction 92/2017) WGS 84 DATUM

Delete  *Fl.G.3s, Buoy No.1* 02°07'.33N, 111°06'.00E

Insert  *Fl.G.3s, Buoy No.1* 02°07'.82N, 111°06'.92E

Chart MAL 7257 (Last Correction 93/2017) TIMBALAI 1948 DATUM


Move  *Fl.G.3s, Buoy No.1* from: 02°07'.37N, 111°05'.79E
to: 02°07'.86N, 111°06'.71E

Chart MAL 731 (Last Correction 92/2017) WGS 84 DATUM



Move  *Fl.G.3s, Buoy No.1* from: 02°07'.33N, 111°06'.00E
to: 02°07'.82N, 111°06'.92E

Chart MAL 740 (Last Correction 93/2017) WGS 84 DATUM

Move  *Fl.G.3s, Buoy No.1* from: 02°07'.33N, 111°06'.00E
to: 02°07'.82N, 111°06'.92E

115*/2017 MALAYSIA – Sarawak – Kuala Santubong – Buoy.

Source: National Hydrographic Centre.

Chart MAL 723 (Last Correction 47/2017) WGS 84 DATUM

Delete  *FI(2)10s* 01° 45'.48N, 110° 17'.17E

116*/2017 MALAYSIA – Sabah – NE P. Berhala – Light Beacon and Buoy.

Source: National Hydrographic Centre.

1. Berhala light, FI.10s194m28M, Inner safe water buoy, *LFI.10s*, resumed operation.
2. Inner safe water buoy, *LFI.10s*, Outer safe water buoy, *LFI.10s*, re-established.
3. Former Notice No. 126/2014(T), 34/2017(T) is cancelled.
4. Charts affected – MAL 8617.

117(T)*/2017 MALAYSIA – Johor – Beting Ramunia – Buoy.

Source: Marine Department of Malaysia No. 30/2017(T).

Chart MAL 515 (Last Correction 77/2017) WGS 84 DATUM

Move  *FI(2)10s* from: 01° 26'.22N, 104° 27'.58E
to: 01° 26'.60N, 104° 27'.70E

118(T)*/2017 MALAYSIA – Johor – Tanjung Setapa – Buoy.

Source: Marine Department of Malaysia No. 42/2017(T).

Chart MAL 515 (Last Correction 117/2017) WGS 84 DATUM


Insert  *FI(2)10s* 01° 17'.88N, 104° 07'.24E

Chart MAL 6124 (Last Correction 96/2017) WGS 84 DATUM

Insert  *FI(2)10s* 01° 17'.88N, 104° 07'.24E

119(T)*/2017 MALAYSIA – Johor – Tanjung Setapa – Wreck.

Source: Royal Malaysian Navy.

Chart MAL 515 (Last Correction 118/2017) WGS 84 DATUM

Insert  *Wk*
MT PUTRI SEA 01° 17'.51N, 104° 07'.13E

Chart MAL 6124 (Last Correction 118/2017) WGS 84 DATUM

Insert  *Wk*
MT PUTRI SEA 01° 17'.51N, 104° 07'.13E

120(P)*/2017 MALAYSIA – Pahang – Pelabuhan Kuantan – Works.

Source: Kuantan Port Consortium Sdn Bhd.

1. Works are in progress to construct the new jetty and breakwater.
2. New breakwater have been established in the vicinity of position, 03° 59'.46N, 103° 26'.39E.
3. The works include extensive changes to the coastline.
4. The construction area is bounded by the follow positions:
 - (a) 03° 59'.94N, 103° 24'.98E
 - (b) 03° 59'.94N, 103° 26'.87E
 - (c) 03° 58'.39N, 103° 26'.87E
 - (d) 03° 58'.39N, 103° 26'.43E
5. Mariners are advised to navigate with caution and keep a safe distance. Contact Kuantan Port Authority for the lates information.
6. These changes will be included on the affected charts where futher information become available.
7. Chart affected – MAL 6359.

SECTION III
NAVIGATIONAL WARNINGS

121(T)/2017 MALAYSIA – Malacca Strait – Exercise Malapura.

Source: Royal Malaysia Navy.

1. Exercise Malapura – 18 to 28 Jul 17 at area bounded by:

(A) Hotel Delta:

- (1) 04°00'.00N, 100°00'.00E.
- (2) 04°30'.00N, 100°00'.00E.
- (3) 04°30'.00N, 100°30'.00E.
- (4) 04°00'.00N, 100°00'.00E.

(B) Hotel Foxtrot:

- (1) 04°00'.00N, 099°30'.00E.
- (2) 04°30'.00N, 099°30'.00E.
- (3) 04°30'.00N, 100°00'.00E.
- (4) 04°00'.00N, 100°00'.00E.

(C) Hotel Golf:

- (1) 04°83'.00N, 100°18'.00E.
- (2) 04°30'.00N, 099°47'.00E.
- (3) 05°00'.00N, 100°45'.00E.

(D) Hotel Hotel:

- (1) 04°03'.00N, 099°30'.00E.
- (2) 05°00'.00N, 099°30'.00E.
- (3) 05°00'.00N, 100°00'.00E.
- (4) 04°30'.00N, 100°00'.00E.

(E) Hotel Juliet:

- (1) 04°03'.00N, 099°00'.00E.
- (2) 05°00'.00N, 099°00'.00E.
- (3) 05°00'.00N, 099°30'.00E.
- (4) 04°30'.00N, 099°30'.00E.

(F) Hotel Kilo:

- (1) 05°00'.00N, 099°30'.00E.
- (2) 05°30'.00N, 099°30'.00E.
- (3) 05°30'.00N, 100°00'.00E.
- (4) 05°00'.00N, 100°00'.00E.

(G) Hotel Lima:

- (1) 05°00'.00N, 099°00'.00E.
- (2) 05°30'.00N, 099°00'.00E.
- (3) 05°30'.00N, 099°30'.00E.
- (4) 05°00'.00N, 099°30'.00E.

(H) Hotel Mike:

- (1) 05°00'.00N, 098°30'.00E.
- (2) 05°30'.00N, 098°30'.00E.
- (3) 05°30'.00N, 099°00'.00E.
- (4) 05°00'.00N, 099°00'.00E.

(I) Hotel November:

- (1) 05°30'.00N, 099°30'.00E.
- (2) 06°00'.00N, 099°30'.00E.
- (3) 06°00'.00N, 100°00'.00E.
- (4) 05°30'.00N, 100°00'.00E.

(J) Hotel Papa:

- (1) 05°30'.00N, 099°00'.00E.
- (2) 06°00'.00N, 099°00'.00E.
- (3) 06°00'.00N, 099°30'.00E.
- (4) 05°30'.00N, 099°30'.00E.

(K) Hotel Romeo:

- (1) 05°30'.00N, 098°30'.00E.
- (2) 06°00'.00N, 098°30'.00E.
- (3) 06°00'.00N, 099°00'.00E.
- (4) 05°30'.00N, 099°00'.00E.

(L) Hotel Sierra:

- (1) 05°30'.00N, 098°00'.00E.
- (2) 06°00'.00N, 098°00'.00E.
- (3) 06°00'.00N, 098°30'.00E.
- (4) 05°30'.00N, 098°00'.00E.

(M) Hotel Xray:

- (1) 06°00'.00N, 099°00'.00E.
- (2) 06°20'.00N, 099°00'.00E.
- (3) 06°20'.00N, 100°00'.00E.
- (4) 06°00'.00N, 100°00'.00E.

(N) Hotel Yankee:

- (1) 06°00'.00N, 098°00'.00E.
- (2) 06°20'.00N, 098°00'.00E.
- (3) 06°20'.00N, 099°00'.00E.
- (4) 06°00'.00N, 099°30'.00E.

2. Royal Malaysian Navy and Republic of Singapore Navy assets.

3. Mariners are advised to keep clear from the exercise area and navigate with extra caution when in the vicinity. Cancel this Notice 29 Jul 17.

4. Chart affected: MAL 553, MAL 554, MAL 565 and MAL 58.

122(T)/2017 MALAYSIA – Offshore Terengganu – Drilling Operation.

Source: Petronas Carigali Sdn Bhd.

1. Drilling Operation – 14 Jul to 11 Sep 17 at 06°05'.95N, 105°06'.62E.
 2. Vessel involved – Naga-4.
 3. Wide berth of 1.5 NM requested. Cancel this Notice 12 Sep 17.
 4. Chart affected: MAL 68.
-

SECTION IV

CORRIGENDUM ON INFORMATION OF MALAYSIAN CHARTS AND PUBLICATION TO BE PUBLISHED

MALAYSIA CHARTS TO BE PUBLISHED 31 JUL 2017

New Editions of MALAYSIAN charts hereby:

<i>Chart</i>	<i>Title, limits and other remarks</i>	<i>Scale</i>	<i>Charts to be WITHDRAWN</i>	<i>Folio</i>
MAL 8617	Sekitar Perairan Sandakan – Teluk Labuk First Edition	1 : 100 000	MAL 8617 1 st Feb 2006	78

SECTION V

CUMULATIVE LIST OF MALAYSIAN NOTICES TO MARINERS

Chart numbers refer to navigational charts in the Malaysian Chart (MAL) series.

The published date quoted indicates the date of publication. While the edition date quoted indicates the newest edition publication. A chart carrying an earlier edition date than that quoted in this list is no longer valid and should be replaced.

Bold figures in bracket indicate the month the notice was issued while the next figures indicate the Notice Number.

Temporary and Preliminary Notices are not included.

User should keep it updated from the information given in section I & II of the subsequent Monthly Edition of Malaysian Notice to Mariners. The next list will be published in Annual Notice to Mariners 2018.

No.	Chart No.	Published	Edition	Notices to Mariners
1.	MAL 4508	31 Dec 1991	31 Dec 2009	2010-51-52-77-78-141-167-168-2011-51-75-88-89-90-92-104-105-106-143-144-2012 -34-52-2013-78-97-116-126-149-175-176-2014-26-38-80-111-112-130-141-2015-(1)26-(2)39-(3)54-(6)106-107-108-(9)167-(12)207-2016-(4)87-(6)123-(9)175-(11)206-2017-(4)76
2.	MAL 5	31 Jan 1989	01 Oct 2008	2013-(2)43-(4)79-(6)107-(10)158-(11)177-178-179-(12)191-2014-(1)27-(2)39-40-(4)64-(5)83-84-(6)88-(7)101-102-(10)131-132-(12)146-2015-(2)40-41-(4)70-(5)90-(6)109-(8)151-(12)214-2016-(4)88-(6)124-(7)138-(9)186-(10)192-(11)207-209-(12)226-227-228
3.	MAL 5123	31 Dec 1999	31 Oct 2015	2016-(2)46-(7)139-(8)157-158-167-2017-(2)42
4.	MAL 5128	31 Oct 1992	31 Oct 2006	2013-(6)108-2014-(10)133-2015-(1)27-(5)92-(6)110-(9)168-(10)181- 2016-(7)139
5.	MAL 5129	01 Apr 2008	-	2008-(6)113-115-117-2009-(8)141-143-(11)178-189-2010-(6)93-94-(11)170-(12)184-2011-(2)44-(4)68-(7)107-109-(8)131-(9)146-147-148-151-2012-(1)36-(5)97-(10)162-163-(12)188-189-2013-(1)30-(4)80-(6)108-(7)117-(9)151-2014-(2)41-(3)53-2015-(1)27-(2)42-(6)111-(9)169-(10)181-(12)208-2016-(3)71-(5)109-(6)125-(7)139-(8)159-160-167-(11)210-211-2017-(1)27
6.	MAL 515	31 Mar 1993	31 Dec 2013	2014-(1)29-(2)41-42-(3)53-54-(4)66-(6)89-(7)103-(9)124-2015-(2)43-(6)111-(8)144-(9)169-(10)181-183-(12)208-209-2016-(2)47-(3)71-(5)109-110-(6)125-126-127-(7)140-(8)160-161-162-(11)211-212-(12)229-238-2017-(1)27-28-29-(3)58
7.	MAL 521	15 Dec 1989	31 Dec 2012	2013-(6)109-(9)151-(10)161-162-2014-(5)82-2015-(3)55-(4)71-(5)93-(6)111-(8)147-148-2016-(3)71-(5)109-(6)125-(8)159-(10)192-(11)211-223
8.	MAL 5217	31 Aug 1994	31 Dec 2016	2017-(5)86
9.	MAL 5230	01 Nov 2016	-	2017-(6)109
10.	MAL 5239	31 Dec 2012	-	2015-(7)132-133-2016-(3)72-(11)223
11.	MAL 5257	01 Dec 2016	-	
12.	MAL 5300	01 Jun 1998	30 Sep 2011	2016-(1)29-(11)213-(12)227-2017-(6)110
13.	MAL 5307	15 Nov 1998	31 Aug 2011	2013-(3)69-(9)152-2014-(12)149-2016-(9)176-2017-(3)67
14.	MAL 532	30 Jun 1989	31 Dec 2012	2015-(7)132-133-(8)149-152-(12)212-2016-(3)72-(4)88-(11)209-214-223-(12)227

No.	Chart No.	Published	Edition	Notices to Mariners
15.	MAL 5322	30 Aug 1991	31 Aug 2011	2012-(3)72-(4)83-(6)113-116-(10)164-2013-(1)31-(3)68-69-2015-(5)90-2016-(4)88
16.	MAL 54	01 Sep 2002	31 Oct 2006	2013-(7)119-(9)151-(10)161-162-(11)180-2014-(2)41-(4)67-2015-(2)41-(3)55-(4)71-72-(5)90-93-95-(6)111-(8)147-148-149-152-2016-(3)71-(4)88-(6)125-(11)209-214-215-2017-(6)111
17.	MAL 540	31 Dec 1993	15 Jul 2007	2015-(2)41-(5)90- 2016-(1)30-(2)49-(4)88-(11)209-(11)215-2017-(3)68-2017-(6)111-112
18.	MAL 5403	30 Sep 1988	31 Dec 2012	2013-(11)180-2016-(2)49
19.	MAL 5410	15 Sep 1993	31 Dec 2012	2014-(2)43-(7)104-(9)125-2015-(3)56-(5)96-(8)153-2016-(12)231
20.	MAL 5416	01 Mar 1984	31 Dec 2015	2016-(7)141
21.	MAL 5419	01 Nov 1985	16 Sep 2016	2016-(7)141
22.	MAL 5425	30 Dec 1991	31 Dec 2015	2016-(7)141-(9)180-(12)231
23.	MAL 5529	01 Mar 2006	31 Dec 2016	2017-(3)61-(5)87
24.	MAL 553	01 Sep 1992	15 Jul 2007	2015-(3)56-57-58-(6)118-(8)145-(10)184-2016-(1)30-(2)49-(9)182-2017-(1)35-2017-(6)111
25.	MAL 5536	01 Dec 2016	-	2017-(4)78-(5)87
26.	MAL 554	15 Jun 1999	15 Aug 2005	2015-(3)56-(5)96-(10)184-2016-(1)30-(2)49-(9)183-(12)231-2017-(1)35-(4)78-2017-(6)111
27.	MAL 5622	30 Sep 1993	31 Dec 2010	2011-(3)58-59-2013-(1)33-(9)153-(11)182-2014-(6)91-(7)105-2016-(1)31-(3)74-75-(4)89-(8)168
28.	MAL 5625	31 Oct 2015	-	
29.	MAL 5630	31 Dec 2010	-	2011-(3)59-(10)165-2013-(9)153-2016-(2)60-(3)74-75-(4)89-(8)168
30.	MAL 5631	30 Sep 1991	31 Dec 2010	2013-(11)177
31.	MAL 565	31 Dec 1994	31 Dec 2009	2016-(12)232-2017-(1)35-(4)79
32.	MAL 58	31 Dec 1997	15 Jul 2004	2013-(6)111-(11)177-180-2014-(6)92-2015-(2)39-41-(3)57-58-(6)118-(8)145-2016-(1)30-(2)60-(3)75

No.	Chart No.	Published	Edition	Notices to Mariners
33.	MAL 6	01 Oct 1991	30 Sep 2014	2014-(9)126-127-(10)136-137-2015-(1)28-(4)74-75-76-77-78-(6)119-(7)137-138-(8)157-(11)202-203-(12)214-216-2016-(1)35-(2)50-51-(6)128-129-(11)206-216-2017-(3)62-(4)76-(6)113
34.	MAL 6124	30 Sep 2014	-	2015-(12)210-2016-(3)76-(5)110-111-(6)127-130-(7)139-(9)185-(11)217-(12)233-2017-(1)31-35
35.	MAL 6125	01 Sep 2002	15 Apr 2007	2008-(8)161-(10)196
36.	MAL 6128	01 Jun 1998	15 Jul 2016	
37.	MAL 6130	30 Nov 1992	01 Dec 2016	2017-(5)88
38.	MAL 6134	30 Nov 1992	01 Dec 16	2017-(3)63-(5)88
39.	MAL 6202	01 Aug 2014	-	
40.	MAL 625	01 Jun 1996	31 Dec 2010	2011-(4)70-2012-(5)96-(6)118-(7)125-2013-(3)74-(9)150-2014-(10)131-(11)142-2015-(4)73-(5)98-(6)120-121-(7)134-(10)186-(11)200-2016-(3)76
41.	MAL 6257	31 Dec 1992	15 Jul 2007	2009-(7)132-2012-(5)96-(7)125-2015-(6)121-(11)200
42.	MAL 635	31 Dec 1996	15 Apr 2007	2007-(7)91-(9)129-2011-(4)70-2012-(3)73-(5)96-(6)118-(7)125-128-2013-(1)34-2015-(4)73-(6)120-(7)134-135-(11)200-201-(12)214-2016-(1)33-(8)163
43.	MAL 6359	31 Dec 1991	15 Apr 2007	2007-(7)91-(8)107-2008-(1)40-(5)101-(10)197-2011-(4)70-2012-(4)85-(10)168-2013-(2)49-50-(10)166-2014-(2)47-2015-(7)136-2016-(3)77
44.	MAL 6416	30 Apr 1988	31 Oct 2007	2007-(7)91-(8)107-2008-(1)40-(5)101-(10)197-2011-(4)70-2012-(4)85-(10)168-2013-(2)49-50-(10)166-2014-(2)47-2015-(7)136-2016-(3)77
45.	MAL 6436	01 Oct 1999	31 Dec 2009	2012-(5)103-2016-(2)53
46.	MAL 6441	01 Jun 2000	01 Oct 2008	2012-(5)103-2013-(1)37-2014-(4)70-2016-(2)53-(3)79
47.	MAL 645	30 Sep 2000	15 Apr 2007	2007-(6)82-(7)91-(8)107-(9)125-2008-(1)40-(10)197-2010-(8)126-2012-(4)80-85-(5)103-2013-(1)26-(2)49-50-2014-(7)101-(10)132-2015-(12)218-2016-(2)53-(3)79

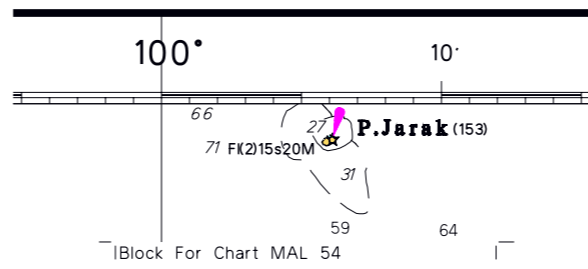
No.	Chart No.	Published	Edition	Notices to Mariners
48.	MAL 65	31 Dec 2008	-	2010-(4)72-(5)78-79-(7)105-(10)152-(12)182-2011-(1)34-(6)91-(8)130-2012-(1)37-(3)73-(4)80-(5)96-(7)124-125-128-2013-(1)26-27-28-(2)43-(7)118-2014-(2)39-42-(4)64-(7)101-103-(10)131-132-(11)142-2015-(4)73-(5)98-(6)120-122-(7)134-135-(11)201-(12)214-2016-(1)33-(6)124-(11)212-2017-(1)29
49.	MAL 6522	01 Apr 2008	-	2008-(12)227-2009-(3)76-2010-(9)144
50.	MAL 654	15 Dec 2001	31 Oct 2006	2013-(7)120
51.	MAL 655	31 Dec 1993	15 Apr 2007	2007-(11)166-2008-(3)67-(11)211-(9)183-2010-(5)80-(6)91-2011-(11)184-2012-(1)42-(2)55-61-(3)71-80-2013-(1)28-29-37-(2)43-2014-(2)27-(2)39-(3)52-(4)64-(6)88-(7)102-(12)146-2015-(6)123-2016-(3)79-(6)124
52.	MAL 664	15 Dec 2001	31 Dec 2010	2011-(12)204-2012-(11)176-179-2013-(1)27-36-(5)104-(7)121-(10)158-(11)179-2014-(1)31-(2)40-2015-(4)70-(8)154-2016-(2)48-(11)207-208-218-(12)228
53.	MAL 673	15 Nov 1998	31 Dec 2009	2013-(7)121
54.	MAL 68	31 Dec 2008	-	2009-(11)183-(12)191-2010-(3)52-(4)75-(5)80-(6)91-(8)127-2012-(2)55-(3)71-(7)127-(11)176-179-2013-(1)28-29-36-(2)43-(5)104-(6)107-(7)121-(10)158-(11)178-179-(12)191-2014-(1)27-31-(2)39-40-(4)64-(5)84-(6)88-(7)102-(12)146-2015-(2)40-(4)70-(6)109-123-2016-(8)164-(9)186-(10)193-(11)207-(12)228
55.	MAL 7139	15 Nov 1998	31 Dec 2009	2010-(3)64-(12)189-2011-(1)38-39-(11)189-2012-(3)74-2016-(3)81-2017-(5)89
56.	MAL 7150	01 Dec 1989	31 Oct 2009	2010-(2)44-(12)189-2011-(1)38-2012-(3)74-(4)86-(12)193-2013-(1)38-39-(5)105-2014-(2)49-(3)57-2015-(11)202-2017-(5)90
57.	MAL 7212	30 Oct 1992	31 Dec 2009	2010-(7)108
58.	MAL 7213	30 Sep 1991	01 Oct 2008	2016-(2)54
59.	MAL 7215	15 Apr 1989	01 Oct 2008	2009-(2)58-(4)80-94-2010-(10)157-159-2013-(9)154-(10)167-2014-(3)57-(4)71-2016-(2)54-(4)90-2017-(2)45-46-(5)91-92-(6)114

No.	Chart No.	Published	Edition	Notices to Mariners
60.	MAL 723	01 Dec 1996	30 Sep 2002	2004-(4)68-(5)80-(6)95-(7)111-(8)124-2005-(3)63-(4)78-79-80-(5)109-(6)133-134-135-(9)176-2006-(1)41-(3)61-(5)82-83-(12)154-155-156-2007-(9)134-135-(12)192-2008-(2)52-(3)74-(6)121-(7)143-(8)163-(10)201-2009-(4)92-93-95-(5)106-107-(8)148-150-2010-(1)36-2012-(3)74-(8)139-2013-(5)105-(11)185-2014-(2)49-(3)57-2015-(2)47-(10)187-(11)202-2016-(4)91-(5)112-(10)195-2017-(1)32-(2)47-(6)115
61.	MAL 7257	30 Oct 1989	15 Nov 2001	2003-(5)72-(7)100-(8)113-2005-(4)82-(9)177-(12)206-2006-(3)62-2007-(2)45-(4)66-2008-(2)59-(7)144-2009-(2)58-(4)80-94-2010-(10)157-159-2011-(3)61-2013-(2)51-52-(9)154-(10)167-2014-(3)57-2015-(3)60-(4)74-(11)202-2016-(1)35-(2)54-(4)90-2017-(2)46-(5)92-93-(6)114
62.	MAL 731	15 Jul 1996	31 Dec 2007	2008-(3)74-(8)163-(10)201-2009-(2)58-(3)80-(4)92-93-(5)107-(8)150-151-2010-(5)83-(10)156-159-2011-(11)188-2012-(5)104-2013-(2)53-(3)76-(5)105-(7)124-2014-(2)49-(3)57-(4)71-2015-(2)47-(3)61-(4)74-(10)187-(11)202-2016-(1)35-(4)90-2017-(2)46-47-(5)92-(6)114
63.	MAL 7317	30 Sep 1988	31 Dec 2007	2008-(3)75-(4)89-(6)122-(9)184-185-2009-(1)43-(7)135-2010-(3)65-66-(5)85-(7)109-(12)190-2011-(1)40-(9)157-(12)206-2012-(5)106-2013-(6)115-(10)168-2014-(3)57-59-(11)143-2015-(4)80-81-(10)188-2016-(1)36-(5)115-(8)165-(10)197-2017-(2)48-(5)94
64.	MAL 7332	15 Aug 1989	01 Apr 2008	2007-(12)193-2008-(6)122-(8)164-(9)184-185-2010-(3)65-66-(5)85-(7)109-(12)190-2011-40-77-157-206-2012-(5)106-2013-(6)115-(10)168-2014-(3)57-59-(11)143-2015-(10)188-(11)202-2016-(5)112-115-(10)197-(11)219-2017-(2)48
65.	MAL 740	15 Apr 1996	31 Dec 2008	2009-(2)58-(3)80-94-(9)165-2011-(3)61-(5)79-2012-(10)169-170-2013-(2)47-51-52-(3)70-(8)128-129-2014-(1)32-(3)57-58-(4)69-71-2015-(1)28-(3)60-(4)74-75-(11)202-2016-(1)35-(4)90-2017-(1)32-(2)46-(5)92-93-(6)114
66.	MAL 741	01 Jun 1998	15 Nov 2002	2003-(1)37-(6)86-(9)122-(10)132-(11)150-2004-(5)82-(6)97-(11)178-179-180-181-182-2005-(1)36-(3)64-(4)83-85-86-(8)168-(9)178-(12)208-2007-(2)44-46-47-48-49-50-(3)58-(12)193-2009-(2)62-(3)79-(9)164-165-2010-(10)160-(12)188-190-2011-(5)77-(6)96-(11)187-(12)206-2012-(5)106-2013-(3)70-(6)112-(8)128-129-(10)169-2014-(2)45-(3)57-59-(4)69-2015-(2)48-(4)75-(11)202-2016-(5)115-116-(10)197-2017-(2)49-50-(3)64-(6)113
67.	MAL 750	01 Oct 1998	31 Dec 2007	2013-(8)129-(11)184-2014-(1)33-(3)55-57-(4)73-(6)93-2015-(1)34-(3)62-63-(4)77-78-(11)202-2016-(1)37-(2)50-(9)188-(10)199-

No.	Chart No.	Published	Edition	Notices to Mariners
68.	MAL 751	31 Dec 1993	31 Oct 2009	2010-(1)38-(7)110-(10)160-(12)188-190-2011-(5)77-(9)156-(11)187-(12)206-2012-(5)106-2013-(3)70-(6)101-112-(7)128-129-(10)169-(11)184-2014-(2)45-(3)55-57-59-(4)69-(6)93-(10)137-2015-(2)48-(4)75-77-(11)202-2016-(5)115-116-(9)188-(10)197-2017-(2)49-50-(6)113
69.	MAL 752	15 Dec 1997	31 Dec 2009	2010-(3)67-(4)76-(5)78-2011-(3)62-(10)172-(11)191-(12)205-207-2012-(4)84-(5)105-(6)119-(6)129-130-(8)140-(12)192-2013-(7)122-123-(8)129-(10)165-(12)194-2014-(1)33-(3)57-60-(4)73-(8)116-117-2015-(3)62-63-(4)78-(6)125-(8)156-(9)170-(12)202-214-2016-(1)37-38-(2)56-(8)166-(10)199-2017-(2)52-(4)81
70.	MAL 754	31 Dec 1993	15 Aug 2003	2004-(1)39-(2)48-(7)112-(8)128-129-(9)138-139-140-142-(10)158-(11)183-184-185-(12)210-2005-(1)38-(4)87-(5)111-112-(6)139-(9)179-180-(11)196-197-2006-(2)51-(4)71-(5)84-(7)106-(8)113-(10)136-2007-(1)37-(6)85-(9)133-(10)161-(11)175-2008-(1)41-42-(2)53-(6)123-125-2009-(2)63-(3)78-(5)108-(10)174-(11)187-2010-(1)39-(4)76-(5)78-(7)110-111-(10)158-161-(12)191-2011-(3)62-(4)71-(7)117-172-(11)191-(12)205-207-2012-(4)84-(5)105-(6)119-(7)129-130-(8)138-140-(12)192-2013-(7)122-123-(8)129-(10)165-(11)184-(12)194-2014-(1)33-(3)57-60-(4)73-(8)116-117-2015-(1)34-(2)49-(3)62-63-(6)125-126-(9)170-(11)202-(12)214-2016-(1)37-38-39-(2)50-56-58-(5)112-(8)166-(10)199-(12)235-2017-(1)32-(2)52-(4)81
71.	MAL 762	31 Oct 2009	31 Dec 2015	
72.	MAL 7724	30 Apr 1996	31 Dec 2010	
73.	MAL 781	30 Oct 1988	31 Dec 2013	2014-(7)106-2015-(6)126-2016-(2)51
74.	MAL 8421	01 Nov 1999	31 Dec 2009	2010-(8)128-2011(12)-208
75.	MAL 8425	01 Nov 1999	15 Apr 2007	2008-(2)55-(4)92-(5)103-2009-(5)110-2010-(5)84-2011-(6)97-(8)136-(12)208-2012-(1)47-(9)156-2013-(2)48
76.	MAL 8433	01 Sep 2002	31 Dec 2007	2008-(10)199-2016-(4)92
77.	MAL 8434	15 Dec 2001	31 Oct 2006	
78.	MAL 8502	31 Jul 1996	01 Oct 2008	2008-(11)212
79.	MAL 8503	15 Sep 1998	15 Jul 2016	

No.	Chart No.	Published	Edition	Notices to Mariners
80.	MAL 8518	31 Dec 1993	31 Dec 2013	2015-(5)125-(9)171-2016-(1)38-(2)56-2017-(3)65
81.	MAL 8523	30 Sep 2014	-	2015-(5)125
82.	MAL 8553	15 Jul 2016	-	2016-(12)236-2017-(2)53
83.	MAL 860	30 Sep 2014	-	2015-(8)157-(12)214-2016-(1)40-(2)59
84.	MAL 8608	15 Nov 1992	31 Dec 2007	2008-(2)54-2010-(5)87-2011-(12)208-2012-(7)132-133-(11)180-2013-(2)54-(7)125-2014-(3)50
85.	MAL 8617	01 Feb 2006	-	2013-(11)188-2014-(9)126-2015-(12)214-2016-(1)41-(6)131-(7)144-(11)222-2017-(1)35-(6)116
86.	MAL 8621	31 Dec 2010	-	2015-(12)214-2016-(12)223
87.	MAL 864	31 Aug 1993	31 Dec 2007	2015-(2)49-(6)125-126-(11)214-2016-(1)38-39-(2)56-58-(4)93-(8)169-(10)200-(12)235-2017-(1)32-(2)52-(3)62-66-(4)81
88.	MAL 8645	31 Dec 2008	-	2011-(12)208-2015-(12)214-2016-(5)117
89.	MAL 865	31 Dec 2007	-	2010-(7)111-2011-(12)208-2012-(1)46-2013-(2)55-(7)123-2014-(9)127-2015-(7)139-(12)214-2016-(4)93-2017-(3)62
90.	MAL 871	01 Jun 1998	30 Sep 2014	2016-(7)145
91.	MAL 8715	01 Aug 2014	-	2014-(12)151-2015-(12)214-2016-(7)145-(12)237
92.	MAL 872	31 Dec 1993	31 Dec 2010	2011-(4)71-(12)208-2012-(1)48-2013-(2)54-55-(4)83-2014-(9)127-2015-(6)125-(7)139-(12)214-2016-(1)38-(2)56-(4)93-(10)200-(12)235-2017-(4)62-81
93.	MAL 880	31 Aug 2011	-	2013-(12)197-2015-(12)214-2016-(5)118-119-(6)132-(7)145-(12)237
94.	MAL 884	30 Sep 2014	-	2016-(12)206
95.	MAL 885	31 Dec 2013	-	2016-(12)206

To Accompany Malaysia Notice To Mariners No.111 of 2017

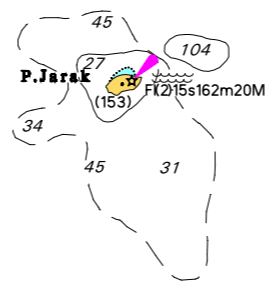


_ | To Accompany Malaysia Notice To Mariners No.111 of 2017 | _

66

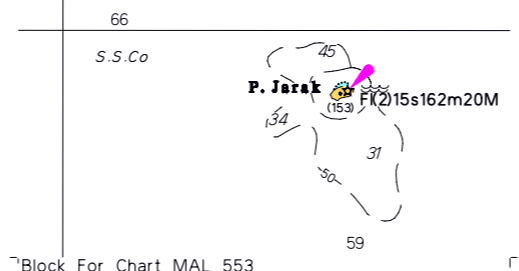
66
S.Sh.Co

71



_ | Block For Chart MAL 540 | _

To Accompany Malaysia Notice To Mariners No.111 of 2017



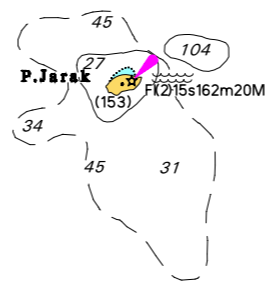
Block For Chart MAL 553

_ | To Accompany Malaysia Notice To Mariners No.111 of 2017 | _

66

66
S.Sh.Co

71



_ | Block For Chart MAL 554 | _

HYDROGRAPHIC NOTE
(for instructions, see overleaf)

Date :

Ref No :

Name of ship or address of sender.

General locality

Subject

Approx position Lat

Long

Chart Affected

Latest Notice to Mariners held

Publication affected (Edition No date of latest supplement, page and Light List No etc)

Details :-

A replacement copy of Chart No.

is required, but see 4 overleaf

Signature of observer/reporter

HYDROGRAPHIC NOTE

Forwarding Information for Malaysian Charts and Hydrographic Publications

INSTRUCTION: -

1. Mariners are requested to notify the National Hydrographic Centre, Bandar Armada Putra, Pulau Indah, 42009 PORT KLANG, Selangor, Malaysia, when new or suspected dangers to navigation are discovered, change observed in aids to navigation, or corrections to publications seems to be necessary.
2. This form and its instructions have been designed to help both the sender and the recipient. It should be used, or followed closely, whenever appropriate. Copies of this Form may be obtained gratis from the Hydrographic Directorate at the above address.
3. When **position** is defined by sextant angles or bearings (true or magnetic being specified) more than two should be used in order to provide and check. Distances observed by radar and the reading of Loran, Decca, etc, should be quoted. However, when there is a series of fixes along a ship course, only the method of fixing and the objects used need be indicated. Latitude and longitude should only be used specifically to position the details when they have been fixed by the astronomical observations and full description of the latter should be given.
4. A cutting from the largest scale chart is the best medium for forwarding details, the alterations and additions being shown thereon in red. When requested, a new copy will be sent in replacement of chart that has been used to forward information, or when extensive observations have involved defacement of the observer's chart. If it is preferred to show the amendments on a tracing of the largest scale chart (rather than on the chart itself) these should be in red as above, but adequate details from the chart must be traced in black ink to enable the amendments to be fitted correctly.
5. When **soundings** are obtained The Mariner's Handbook (NP 100) should be consulted. The echo sounding trace should be marked with times, depths, etc., and forwarded with the report. It is important to state whether the echo sounder is set to register depths below the surface or below the keel; in the latter case the vessel's draught should be given. Time and date should be given in order that corrections for the height of the tide may be made where necessary. The make, name and type of set, together with stylus speed/sound velocity, should also be given.
6. Modern echo sounders frequently register greater depths than the advertised maximum for the set, e.g. with a set whose maximum is 500 metres, a trace appearing at 50 metres may in fact be 550 metres or even 1050 metres. Sounding recorded beyond the set's nominal range usually recognised by the following:-
 - a. the trace being weaker than normal for the depth recorded
 - b. the trace passing through the transmission line
 - c. the "feathery" nature of trace.

As a check that apparently shoal soundings are not due to echoes beyond the set's nominal range sounding should be continued until reasonable agreement with charted soundings is reached. However soundings received after one or more rotations of the stylus can still be useful and should be submitted if they show significant differences from charted depth.

7. Reports, which cannot be confirmed or are lacking in certain details should be withheld. Shortcomings should be stressed and any firm expectation of being able to check the information on a succeeding voyage should be mentioned.
8. Reports of **shoal soundings**, uncharted dangers and navigational aids out of order should, at the mariner's discretion, also be made by radio to the nearest coast radio station. The draught of modern tankers is such that any uncharted depth under 30 metres or 15 fathoms may be sufficient importance to justify a radio message.
9. **Port Information** should be forwarded on Form MH 501a together with Form MH 501. Form MH 501a lists the information required for Admiralty Sailing Directions and should be used as an *aide memoire*. Where there is insufficient space on the form an additional sheet should be used.

Note: An acknowledgement of receipt will be sent and the information then used to the best advantage, which may mean immediate action or inclusion in revision in due course. When the Notice to Mariners is issued, the sender's vessel or name is quoted as sometimes happens the information is also received in foreign Notice to Mariners. Further communication should be expected only if the information is of outstanding value or has unusual features.

**HYDROGRAPHIC NOTE FOR PORT
INFORMATION**

(To accompany Form MH 501)

Name of ship or address of sender

Ref No

Date

1.	NAME OF PORT
2.	GENERAL REMARKS Principal activities and trade Latest population figures and date Number of ships or tonnage handled per year Maximum size of vessel handled. Copy of Port Handbook if available
3.	ANCHORAGES Designation, depths holding ground, shelter afforded
4.	PILOTAGE Authority for requests. Embarkation position. Regulations.
5.	DIRECTIONS Entry and berthing information Tidal Streams. Navigational aids
6.	TUGS Number available and max. hp.
7.	WHARVES Names, number or positions. Lengths. Depth alongside. Height above Chart Datum Facilities available
8.	CARGO HANDLING Container, lighters, Ro – Ro etc.
9.	CRANES Brief details and max. capacity
10.	REPAIRS Hull, machinery and underwater. Ship and boat yards. Docking or shipping facilities. Gives sizes of vessels handled or dimensions. Hard and ramps. Divers.
11.	RESCUE AND DISTRESS Salvage, lifeboat Coastguard, etc.
12.	SUPPLIES Fuel with type and quantities available

	Fresh water with rate of supply. Provisions.
13.	SERVICES Medical De-ratting Consuls. Ship chandlery, compass adjustment, tank cleaning, hull painting.
14.	COMMUNICATIONS Road, rail and air services available. Nearest airport or airfield. Port radio and information service with frequencies and hours of operating.
15.	PORT AUTHORITY Designation, address and telephone number.
16.	SMALL CRAFT FACILITIES Information and facilities for small craft (e.g. yachts) visiting the port. Yacht Clubs, berth, etc.
17.	VIEWS Photographs (where permitted) of the approaches, leading marks, the entrance to the harbour, etc. Picture postcards may also be useful

Signature of observer/reporter.....